

Beyond Recovery:

State of Hawai'i COVID-19 Disaster Recovery Framework

Alexandra Slous
State Disaster Recovery Coordinator
Office of the Governor

Hawai'i Congress of Planning Officials Virtual Conference
October 17, 2020



Photo: Haleakalā, Maui, Hawai'i Tourism Authority / Tor Johnson

Presentation Overview

1

Current Situation



Photo: Napali Coast, Kauai, Hawaii, Tourism Authority / Erin Oro

2

State Disaster
Recovery Framework



Photo: USGS, Kilauea Eruption 6, Island of Hawaii, July 14, 2018

3

Opportunities



Photo: Hanaula Lookout, Oahu, Hawaii, Tourism Authority



Current Situation

HEALTH



- Unprecedented health system demand
- 860+ cumulative COVID-19 hospitalizations
- 12K+ cumulative COVID-19 cases
- 140+ cumulative COVID-19 fatalities
- Loss of health insurance

ECONOMIC



- 98.5% decrease in arrivals by air
- 17.4% unemployment rate
- 378,978 unemployment claims year to date
- 24.7% business closures
- -53.2% job count growth hospitality industry

SOCIAL



- 1/5 experiencing food insecurity
- Extended disruption to education/childcare
- Heightened fear, anxiety, and stress

HOUSING



- 15% inability to pay rent or mortgage
- 11% difficulty paying utilities

COVID-19 Pandemic Impacts

Pandemic Action Plan Top 3 Priorities



PROTECT PUBLIC HEALTH

- Effectively test, trace, isolate
- Ensure our healthcare system is prepared for future surges
- Finalize a vaccination strategy
- Ensure everyone follows the 3 Ws:
WEAR a mask
WASH your hands
WATCH your distance



REVIVE THE ECONOMY

- Launch pre-travel testing
- Support businesses on safe and phased reopening to get people back to work
- Help get residents into new jobs through workforce development programs



STRENGTHEN OUR COMMUNITY

- Distribute CARES Act funds
- Provide timely and sufficient support to the unemployed
- Minimize housing loss
- Facilitate the safe return of students and teachers to the classroom

Roadmap to Recovery & Resilience

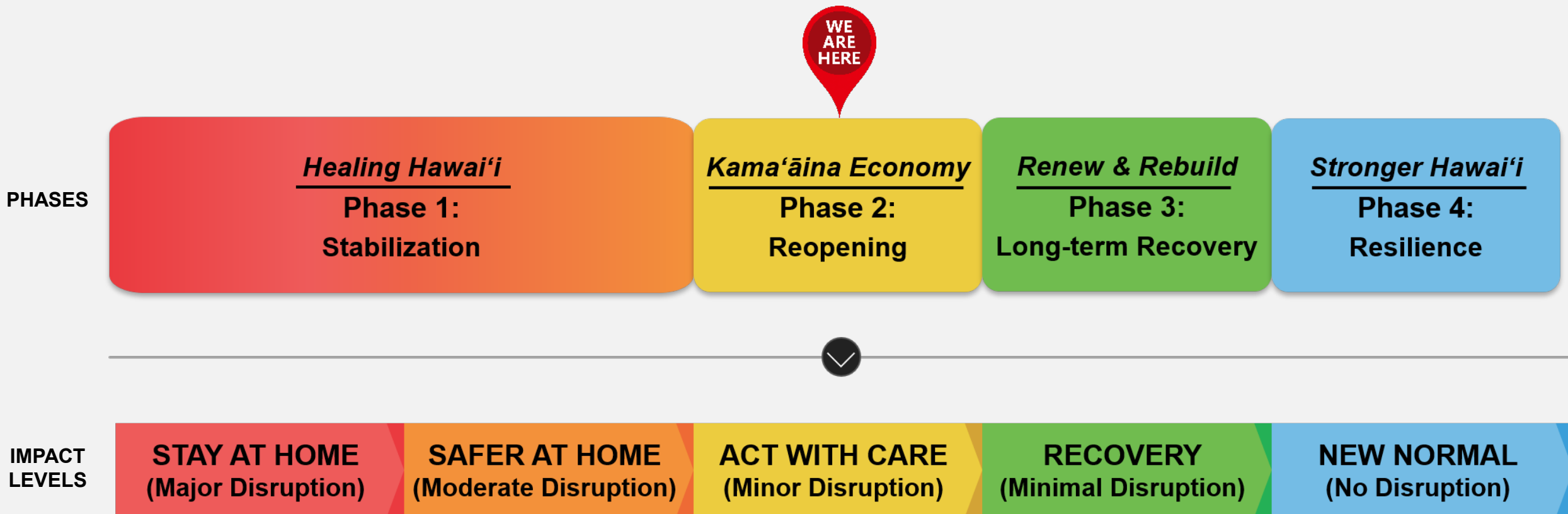
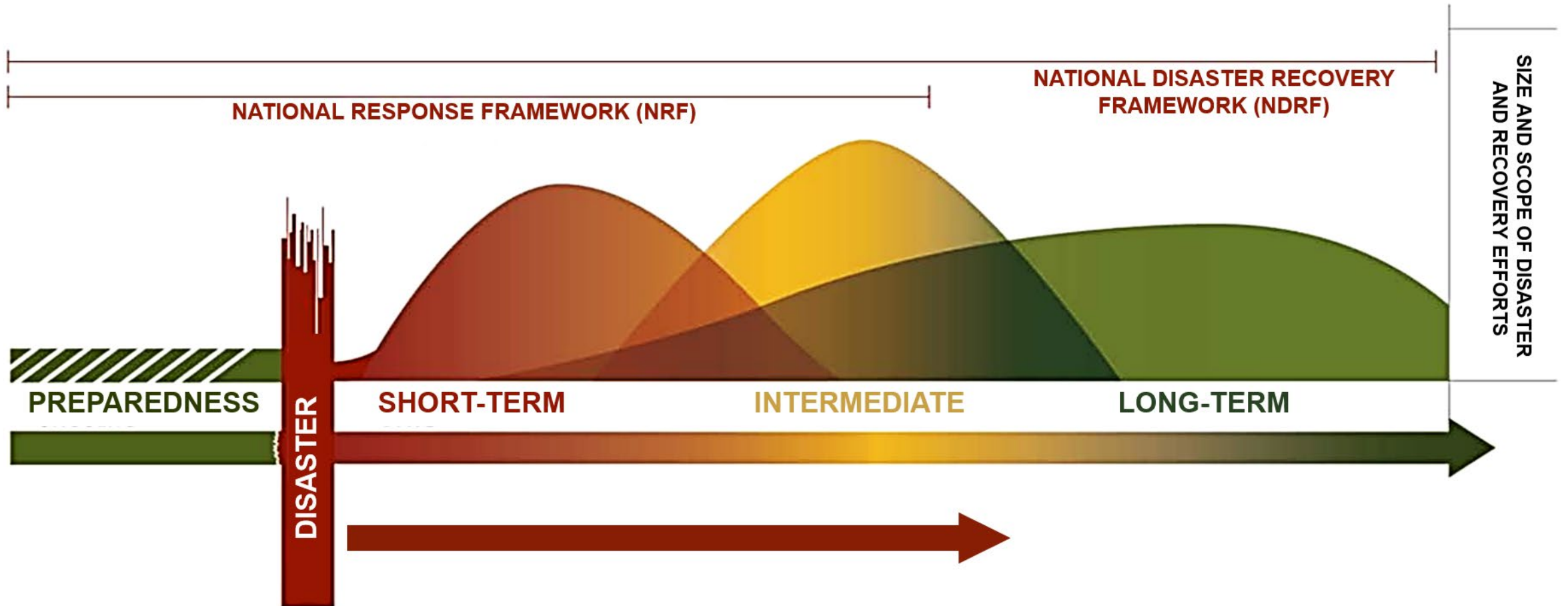


Photo: USGS, Kīlauea Fissure 8, Island of Hawai'i, July 14, 2018



State Disaster Recovery Framework

Major Disaster Response & Recovery Continuum



Impacts from COVID-19 global pandemic are ongoing...

National Disaster Recovery Framework

➔ Established by FEMA in 2011 and updated in 2016

➔ Companion to the FEMA National Response Framework

➔ Establishes a common platform for how the whole community builds, sustains, and coordinates delivery of recovery capabilities



National Disaster Recovery Framework

Strengthening Disaster Recovery for the Nation

September 2011



First Edition: September 2011



National Disaster Recovery Framework

*Second Edition
June 2016*

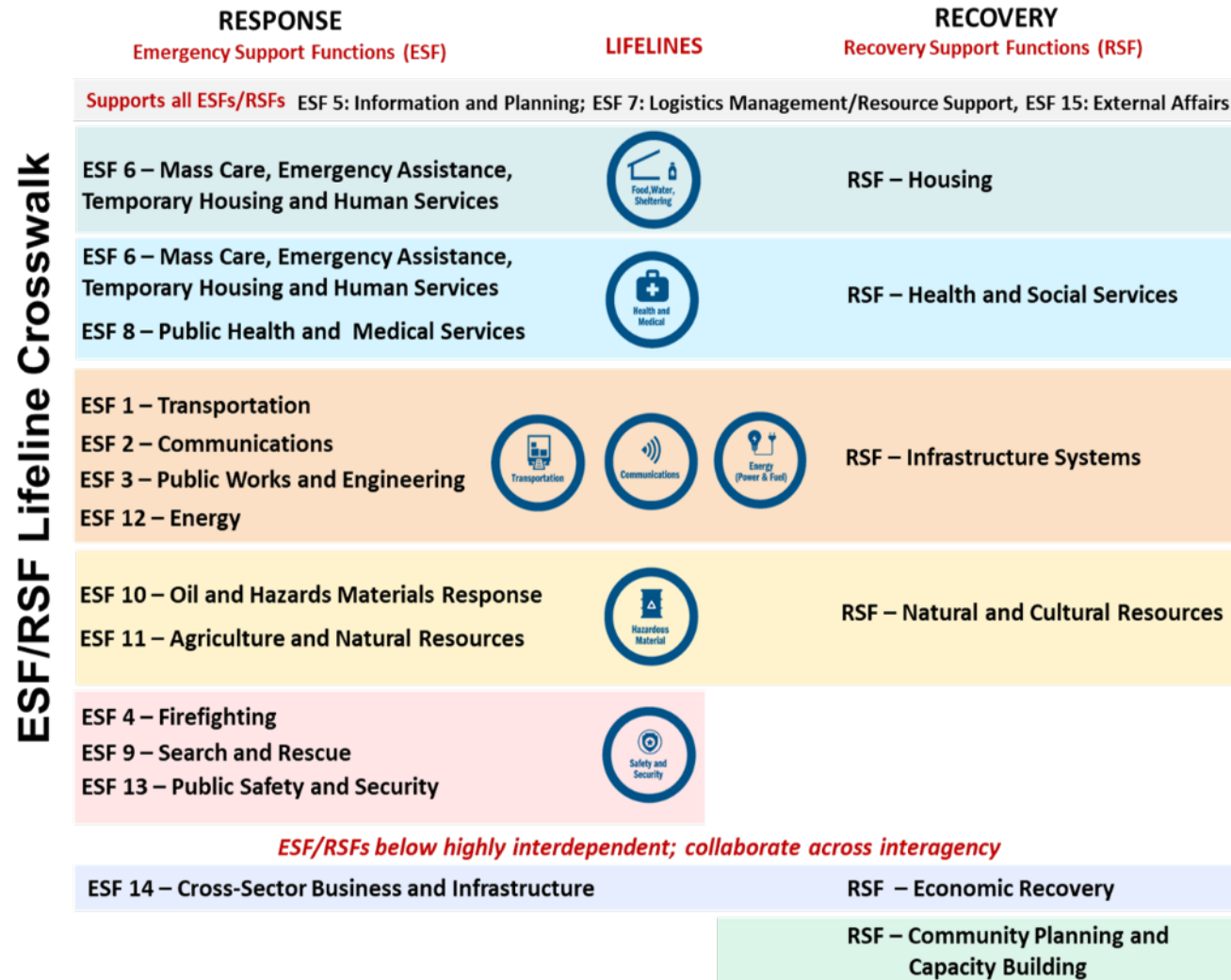


Second Edition: June 2016

Concurrent State COVID-19 Disaster Response and Recovery Operations

Emergency Support Function (ESF) model

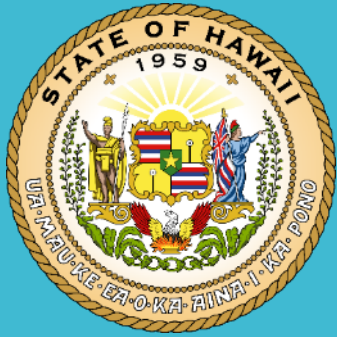
- ✓ Implemented for ongoing emergency response to COVID-19



Recovery Support Function (RSF) model

- ✓ Newly established for State of Hawai'i
- ✓ Operating **concurrently** to build a foundation for long-term recovery from COVID-19 impacts
- ✓ Based on FEMA's *National Disaster Recovery Framework*

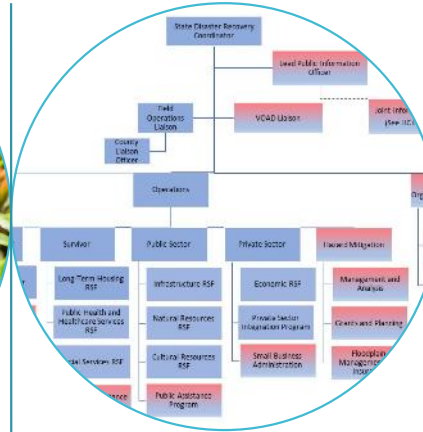
Source: FEMA ESF/RSF Lifeline Crosswalk



The State's Role in Recovery



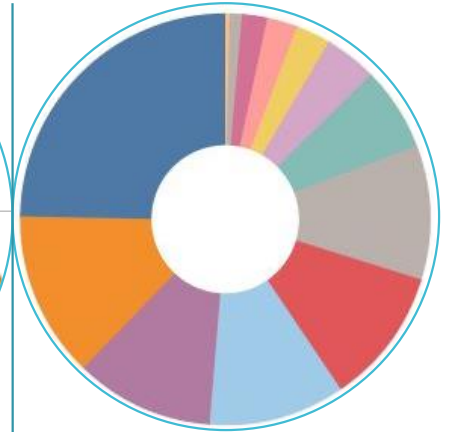
Identify and train leadership to manage recovery



Create an organization and designate agencies to provide recovery support in priority functional areas



Assist local partners by identifying, securing, and leveraging recovery resources and funds



Oversee coordination of recovery elements, set priorities, and direct assistance where it is needed

**STATE
UNIFIED
RECOVERY &
RESILIENCE
FACILITATION
TEAM**

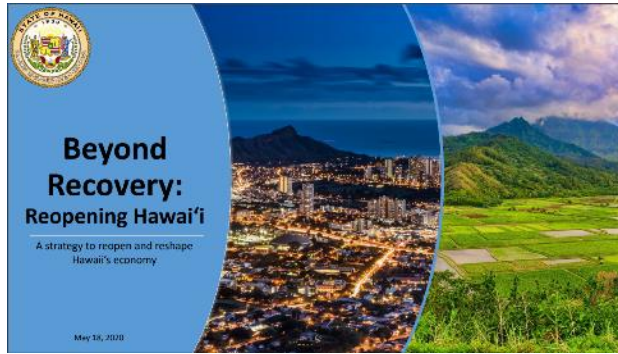


**SURRF Team
Est. May 2020**

PLANNING

Recovery plan installments:

- ✓ Reopening Hawai'i
- ✓ Safe Travels Hawai'i



In progress:
Outcome-Driven Recovery Support Plan

COORDINATION

State Disaster Recovery Support Function (RSF) Activation



IMPLEMENTATION

Plan implementation

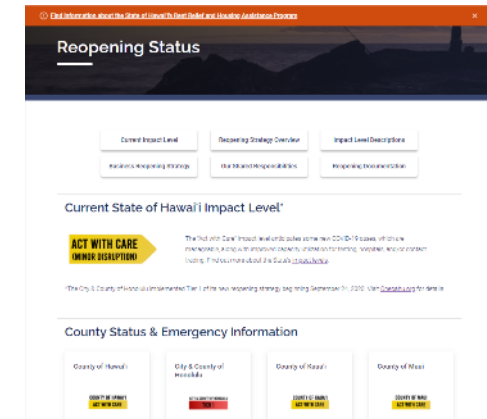
- ✓ Reopening Hawai'i
- ✓ Safe Travels Hawai'i

BUSINESSES & OPERATIONS	As of Sept. 24, 2020			
	STAY AT HOME (Major Disruption)	SAFER AT HOME (Moderate Disruption)	ACT WITH CARE (Minor Disruption)	RECOVERY (Minimal Disruption)
Accommodations	○	○	○	●
Agriculture, non-food	○	○	○	●
Auto dealerships, car washes	○	○	○	●
Banks	○	○	○	●
Childcare	○	○	○	●
Education facilities (K-12, higher)	○	○	○	●
Healthcare, social assistance, government	○	○	○	●
Indoor gathering places, incl. places of worship	○	○	○	●
Indoor exercise facilities, incl. gyms and fitness centers	○	○	○	●
Large venues, clubs	○	○	○	●
Manufacturing, construction	○	○	○	●
Museums, theaters	○	○	○	●
Office settings	○	○	○	●
Outdoor spaces	○	○	○	●
Personal services	○	○	○	●
Restaurants	○	○	○	●
Retail & Repair	○	○	○	●
Shopping malls	○	○	○	●

○ Closed ○ Essential only with physical distancing and Safe Practices ○ Open with physical distancing and Safe Practices ○ Open with adjusted Safe Practices ○ Fully open with adjusted Safe Practices
 In all cases, businesses and operations must follow applicable CDC, industry, and regulatory guidelines related to COVID-19 prior to opening.

COMMUNICATIONS

Recovery Navigator website as central hub for community recovery resources and information



Ongoing Recovery Initiatives

Opportunities

Photo: Tantalus Lookout, O'ahu, Hawai'i Tourism Authority

COVID-19 is changing our society...



Greater engagement in online shopping



Companies and employees working from home



Diminished long-distance travel



Need for a more robust healthcare system



Fewer large gatherings



Less driving or taking public transit

And highlighting new opportunities for Hawai'i's economic resilience



Sell locally-made products to a broader market



Enable Hawai'i workforce to compete for remote work



Diversify Hawai'i's economy for less dependence on tourism



Optimize healthcare-based economy, medical capacity, and telemedicine



Adapt to smaller group settings



Develop sustainable transportation alternatives

State of Hawai‘i

Department of Health

Recovery Navigator

Mandatory Travel and Health Form

Department of Transportation – Airports

Volunteer Ideas or Resources

Request COVID-19 Travel Exemptions

COVID-19 Resources

hawaiiicovid19.com

recoverynavigator.hawaii.gov

travel.hawaii.gov

hidot.hawaii.gov/coronavirus/

kokuaoffers.hawaii.gov

travelexemption.hawaii.gov

Mahalo!



Appendix

Photo: Hawai'i Tourism Authority / Blake Bronstad

Data Sources

- COVID-19 in Hawai'i Facts and Insights, Bank of Hawai'i Foundation and Anthology Research Group, July 2020
- Hawai'i COVID-19 Common Operating Picture: Statewide, Hawai'i Emergency Management Agency, October 2020
- Hawai'i Economic Conditions, Hawai'i State Department of Business, Economic Development, and Tourism, April-August 2020
- Hawai'i State Department of Labor and Industrial Relations, Weekly Unemployment, September 26, 2020
- SMS Community Poll, July 2020